

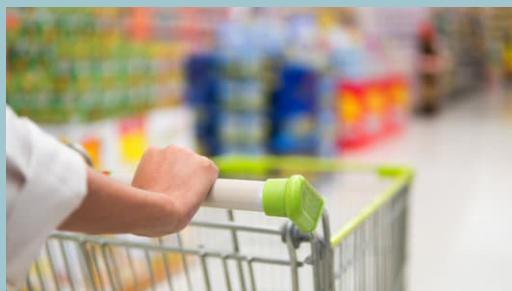


HAPPY NEW YEAR!

by Linda Iwamoto

2019 came to a close with our 18th Annual Christmas Carnival and the owners of Waipahu Town Center joined us at the annual Christmas Tenant Luncheon.

500 lunches were picked up from Grill City as Tenants arrived at appointed times until 1:30pm. Thank you Gary Pinkston for a wonderful Christmas Luncheon! We enjoyed the delicious food and Holiday Spirit!



It's all about giving back to the community year-round and especially during the holiday season...

A Very Special Mahalo to Lorrie Kanno, Coordinator for Weed and Seed and her volunteers in spreading Christmas Joy to 10 Waipahu families last month!



Every year since 2009, through WTC's Secret Santa, WTC has assisted those in need of household and personal items to brighten their holiday season. Lorrie and her volunteers spent countless hours of shopping for each family and their specific needs. They wrapped and tagged each gift in preparation for delivery.

Lorrie said, "This past Christmas, the shoppers were amazing at stretching the dollar and getting almost everything on the wish lists."

Thank you Lorrie, for your dedication to the Secret Santa Project and a heartfelt thanks to our Secret Santa!

SPRING CARNIVAL AND HEALTH FAIR

by Linda Iwamoto

After having a very successful Christmas Parade and Carnival in December, we are now in the initial planning stages for the first promotion of 2020. WTC's "Spring Carnival and Health Fair" will be held on March 28, 2020 from 10AM - 6PM.

All WTC Merchants are invited to participate at this event. Meridian Pacific will provide tables, chairs and power.

If you are interested in joining us, please complete the vendor form and return it to the office by March 6, 2020. Email linda.meridian.pac@gmail.com, Fax 808-671-2427 or drop the form off at the office. Questions? Call Linda 808-688-6716.



2019 Spring Carnival & Health Fair.



JANUARY COMMUNITY EVENTS



Sunday, January 19, 2020
12:00pm-3:00pm
Ka Makana Ali'i
91-5431 Kapolei Pkwy,
Kapolei, HI

Join us in Center Court for a Chinese New Year Celebration presented by the Wah Ngai Lion Dance Association.



Sunday, January 26, 2020
Waialeale Premium Outlets

94-790 Lumiaina St, Waipahu, HI

Celebrate the Year of the Rat at Waialeale Premium Outlets' Lunar New Year Celebration! In honor of this special day, Lung Kong Physical Culture Club will perform a Traditional Chinese Lion Dance.



Monday, January 20, 2020
8:00am
Central Oahu Regional Park
94-801 Kamehameha Highway
Waipahu, HI

Justice Run Hawaii 5K. The course weaves through the south side of the park near the baseball fields - fun for competitive and recreational runners.



Wed., January 29, 2020
5:30pm-7:30pm
Waipahu Public Library

94-275 Mokuola St, Waipahu, HI

Bring the kids and enjoy family friendly activities at this Family Fun Night! Find out more info at Librarieshawaii.org

TENANT REMINDERS

- All sidewalk sales and promotional activities held outside of a Tenant's space, must be covered under the Tenant's liability insurance. A copy of the "Certificate of Insurance" must be submitted to Meridian Pacific prior to this event.
- If you have maintenance issues, please call the Management Office at (808) 677-6700.
- If a tenant loses their mailbox key, the Waipahu Post Office will require to see a copy of Lease, proper identification, completion of a "Lock Change Request Form" and payment of \$50.00 to replace the lock.
- Solicitation of any kind is not allowed on WTC premises. All fundraising activities must be pre-approved by Meridian Pacific.
- 24 hour notice must be provided to the Management Office to gain access to the rooftop for A/C unit servicing. Please call (808) 677-6700.
- Please break down all cardboard before placing in the cardboard dumpsters. If a lock on the rubbish or cardboard dumpster is broken, please call the Management Office so it can be replaced.
- If you are a new employee or have a new vehicle, please register your car with the Management Office. All store employee vehicles must park in the designated stalls marked with a white dot.
- Tenants are responsible for taking precautions for potential bad weather.

Meridian Pacific will be completing the 2019 CAM Reconciliation this month. Look for a credit or additional amount due in February's statement.



TENANT REFERRALS

Meridian Pacific, Ltd. is pleased to offer all of our current tenants 1 month's free rent for any referral of a new qualified tenant that results in a signed lease at one of our available properties. Spaces are currently available for lease at Waipahu Town Center, Puna Kai Shopping Center on the Big Island (punakaishoppingcenter.com) and Waikoloa Plaza on the Big Island (waikoloaplaza.com).

JANUARY 2020

Sun	Mon	Tue	Wed	Thu	Fri	Sat
		Happy New Year! 	1 RENT DUE	2	3	4
5	6	7	8	9 Law Enforcement Appreciation Day 	10 LATE RENT FEE	11
12	13	14	15	16	17	18
19	20 MLK Day  SALES REPORT DUE	21	22	23	24	25 Chinese New Year 
26	27	18	29	30	31	

MERIDIAN PACIFIC, LTD.

94-050 Farrington Hwy. Unit E1-3
 Waipahu, HI 96797
 Phone: (808) 677-6700
 Fax: (808) 671-2427

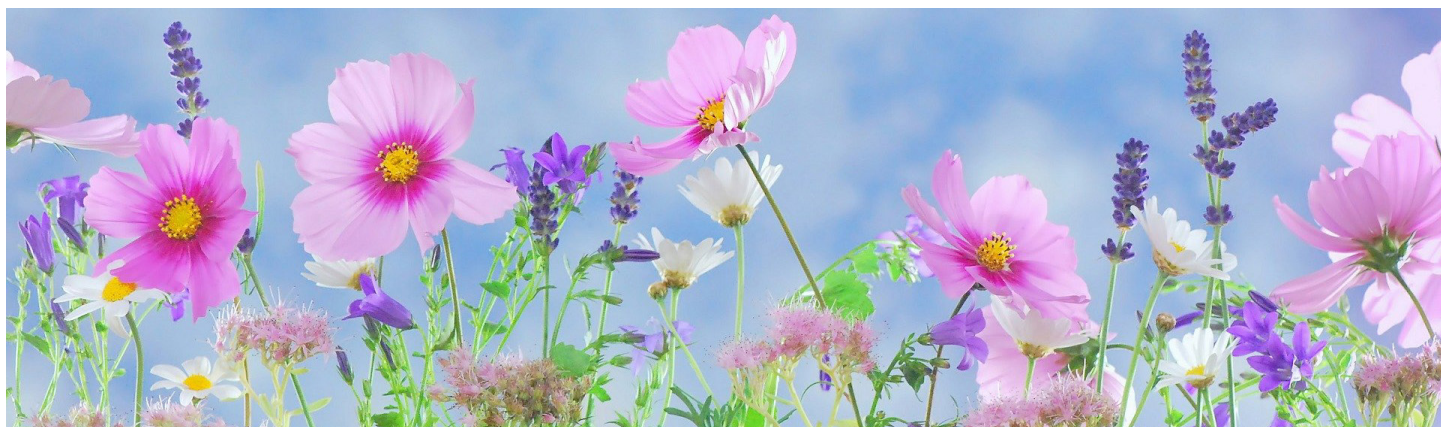
PROPERTY MANAGER

Lou Lebeau
 Phone: (916) 519-7019



ON SITE SECURITY
(808) 292-7874

For issues of emergencies or threats between the hours of 2-6pm, call Securitas. Between the hours of 6am-2pm, call 911.



**WAIPAHU TOWN CENTER'S
SPRING CARNIVAL AND HEALTH FAIR**

Saturday, March 28, 2020

10AM—6PM

VENDOR_____

EMAIL_____ **CELL**_____

VENDOR WILL PROVIDE (CHECK)_____ **FOOD**_____ **GAME**_____ **INFORMATION**

NUMBER OF TABLES_____ **CHAIRS**_____

DO YOU NEED ELECTRICAL POWER? YES/NO (CIRCLE)

LUCKY NUMBER RAFFLE ITEM? DESCRIBE_____

EMAIL FORM TO linda.meridian.pac@gmail.com **by** **March 6, 2020**

FAX 808-671-2427

QUESTIONS? CALL LINDA 808-688-6716

PARTICIPANTS MUST BE PRESENT FOR THE DURATION OF THE EVENT